



Data sheet

Properties and technical information



H2O complete module

501351-01

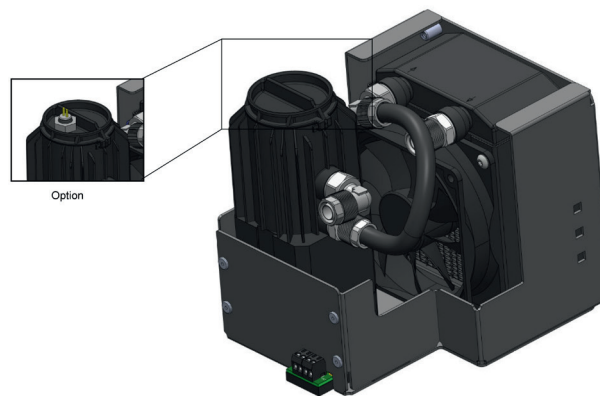
The H2O complete module is a complete and extremely compact direct cooling system which, as a module block, finds the necessary space even where installation space is limited. All components of the cooling system are combined on a single, very compact module, which makes the water cooling system very easy to install in a wide variety of applications (computer systems, 3D printers, ...). Thanks to the 92 mm radiators with a very high depth of around 54 mm, the complete module is also fully convincing in terms of performance.

Thanks to the M4 threads embedded on the back, the cooling system can be fixed to a 120 mm fan outlet, for example, in just a few steps using optional M4 screws. The power supply for the powerful yet very quiet PCPS pump and for the 92 mm fan is provided via a modern 2-pin push-in cable terminal. If a 4-pin connection is required, this can be quickly and easily realised with the optional 12 V adapter to 4-pin Molex.

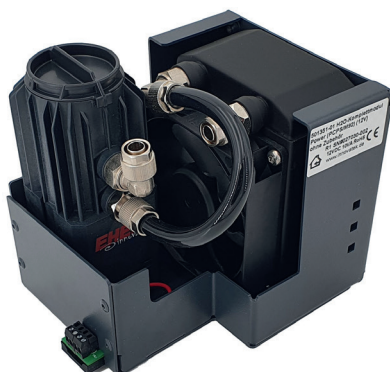
Thanks to its compact dimensions, the complete power module can be used in almost all conceivable applications. In addition, the H2O complete module can be specially adapted to your requirements on request and can also be produced in larger quantities. For example, the additional integration of a sensor for the coolant level (float/level switch) in the cover of the PCPS pump or a separate type of connection are easily possible.

Features:

- Extremely compact all-in-one cooling system
- Simple installation of the cooling unit in the system to be cooled
- High cooling capacity with low noise level
- 1/4-inch thread and 10/8-mm connections offer great expansion possibilities



Optional level sensor in the tank



Front view



Rear view

Data sheet

revised on 9.06.2023

Cooling system H2O complete module



Properties:

Type:	Passive / direct cooling system
Dimensions:	149 x 121 x 133 mm (LxWxH)
Weight:	approx. 2.1 kg
Volume:	< 34 dB(A)
Fan:	1x 92 x 92 x 25 mm (12 V, 1.84 W)
Cooling water temperature:	max. 60 °C
Prescribed cooling medium:	innovatek Protect IP 25% - 50%
Tank volume:	62 ml
Cooling capacity:	300 W (at ΔT 20K)
Thermal resistance:	~ 0.07 K/W
Delivery capacity (external):	max. 250 l/h
Voltage range:	12 V DC
Power consumption:	max. 8 Watt (1 A)
Connection:	4x 10/8 mm (8x1) / 4x 1/4 inch (BSP/G)
Electrical interface:	Connection with plug-in screw terminals
Other:	Level sensor in tank (optional)

Data sheet

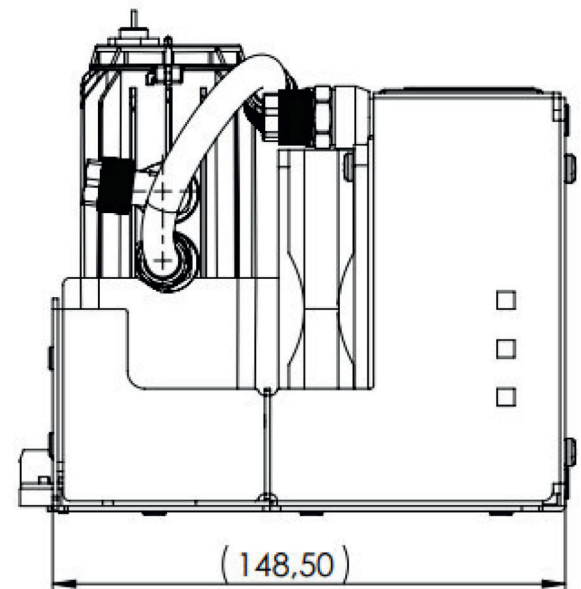
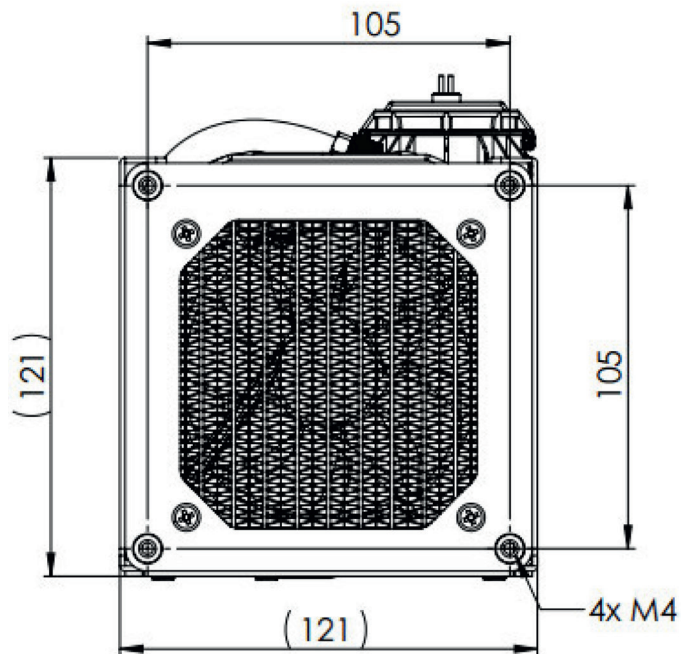
revised on 9.06.2023

Cooling system H2O complete module

innovatek

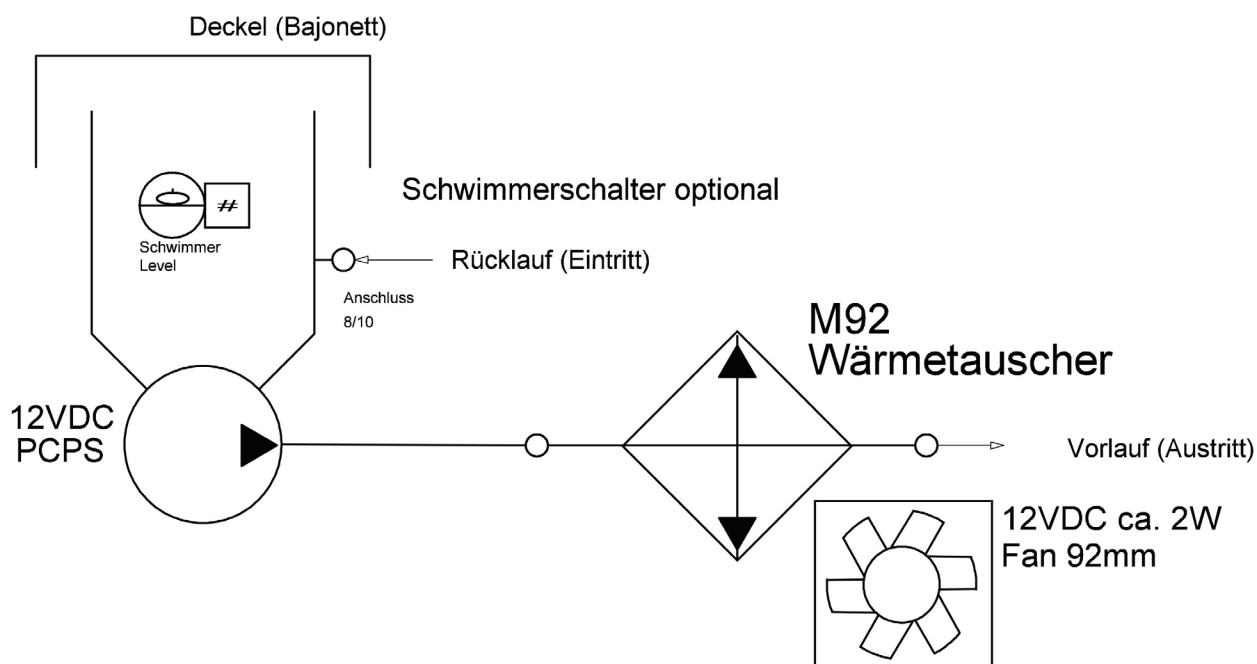


Drawings





Hydraulics

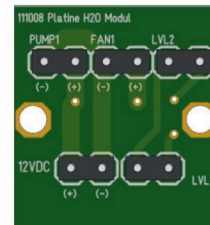
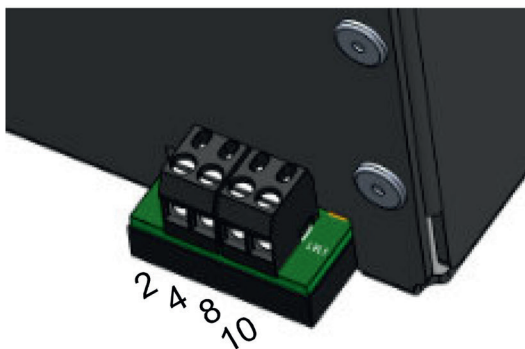
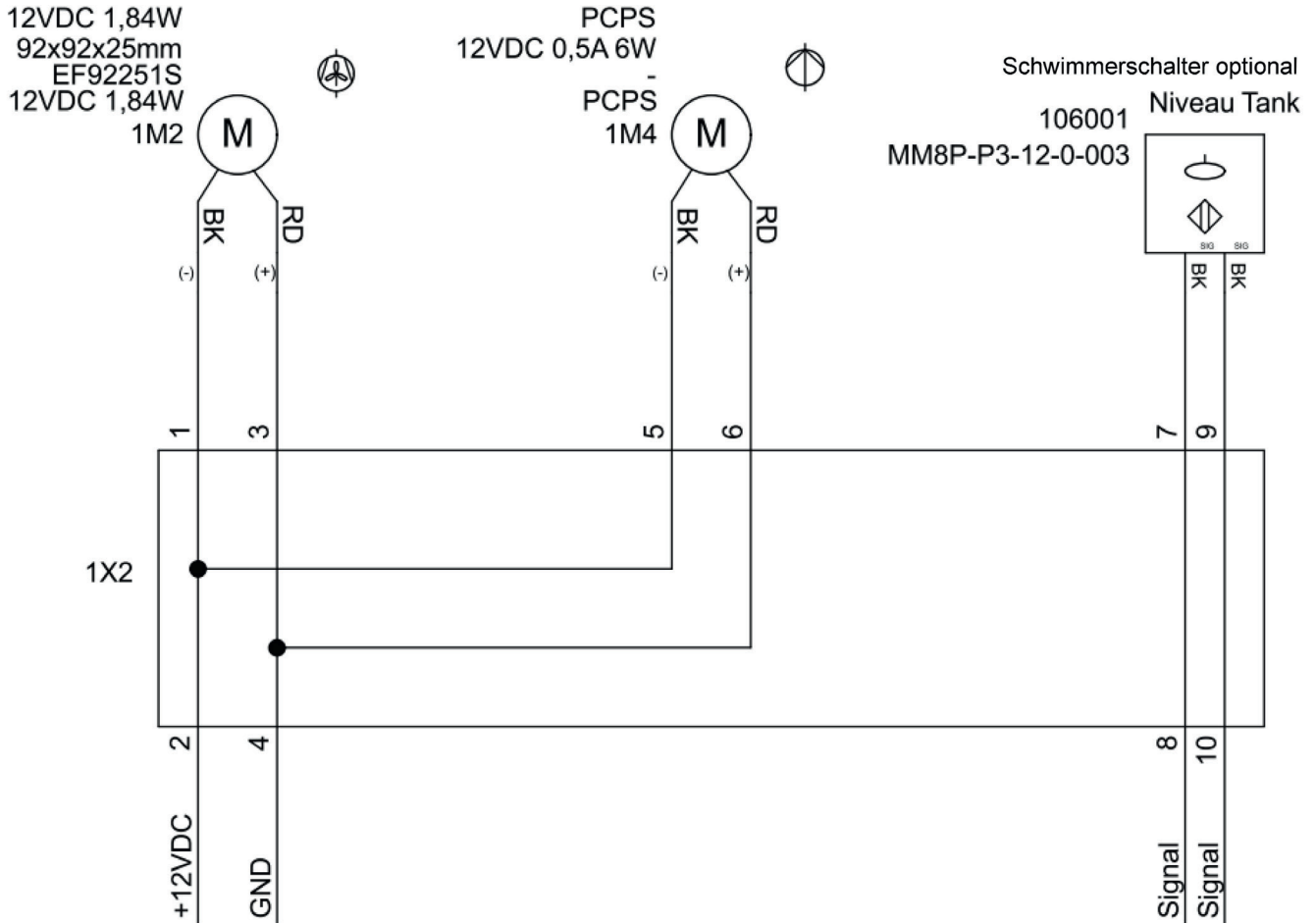


Data sheet

revised on 9.06.2023
Cooling system H2O complete module



Electrical plan



Anschluss mittels steckbaren Schraubklemmen

Data sheet

revised on 9.06.2023

Cooling system H2O complete module

innovatek



Manufacturer / Supplier

innovatek OS GmbH
Stadtweg 9
85134 Stammham

Fax +49 8405 9259-21

Tel. +49 8405 9259-0

E-Mail: info@innovatek.de

Web: <https://www.innovatek.de>